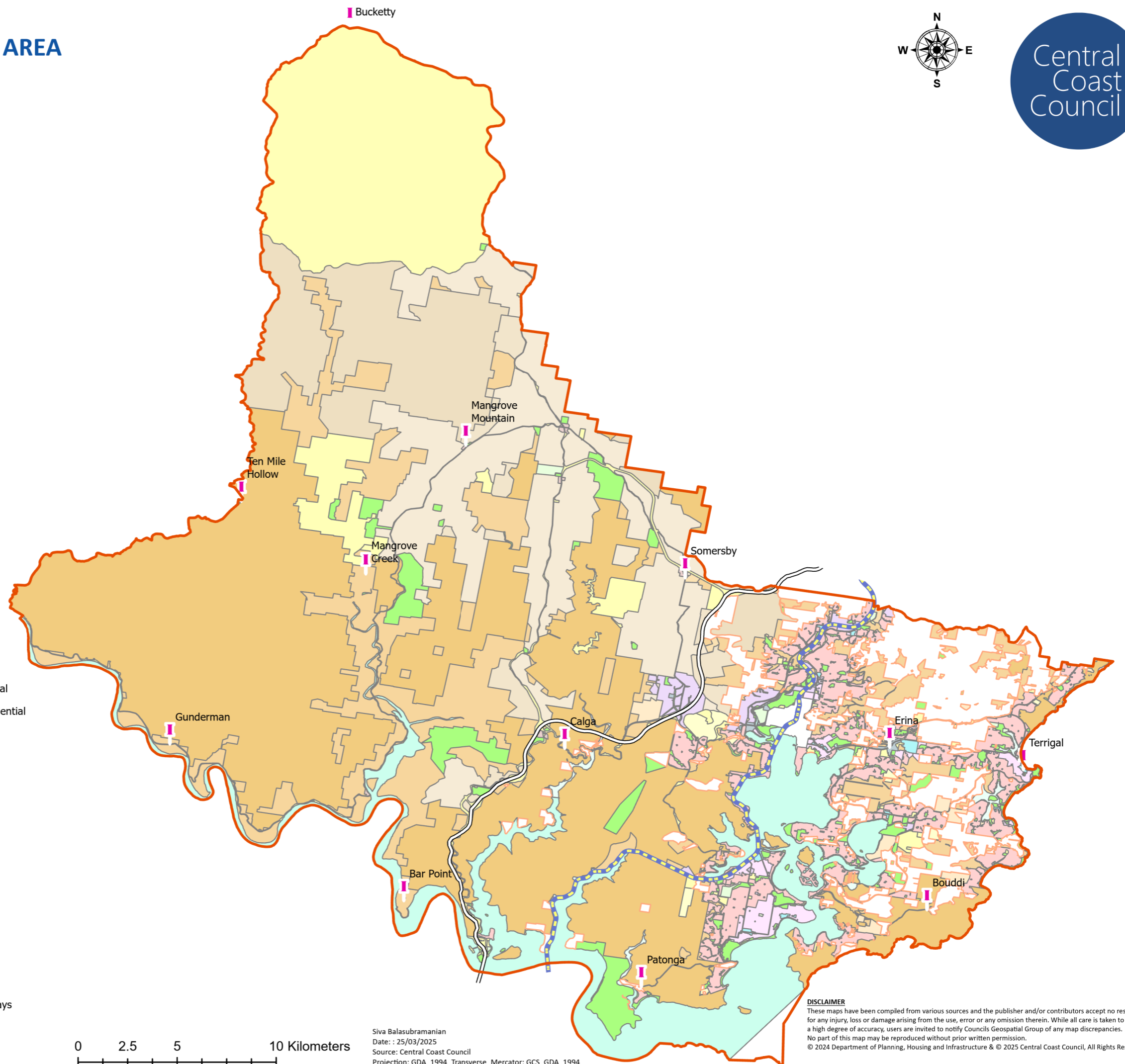
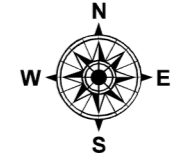


**Figure 1**  
**Development Servicing Plan Area**

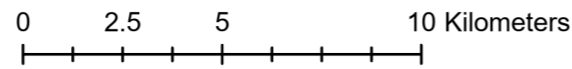
---

# CENTRAL COAST COUNCIL DEVELOPMENT SERVICING PLAN AREA SOUTHERN REGION



## Legend

- Southern Region DSP Boundary
- Towns
- M1 Motorway
- Railway
- LEP\_2022\_LandZoningMap**
- B1 - Neighbourhood Centre
- B2 - Local Centre
- B3 - Commercial Core
- B4 - Mixed Use
- B5 - Business Development
- B6 - Enterprise Corridor
- B7 - Business Park
- C1 - National Parks & Nature Reserves
- C2 - Environmental Conservation
- C3 - Environmental Management
- C4 - Environmental Living
- IN1 - General Industrial
- IN2 - Light Industrial
- IN4 - Working Waterfront
- R1 - General Residential
- R2 - Low Density Residential
- R3 - Medium Density Residential
- R5 - Large Lot Residential
- RE1 - Public Recreation
- RE2 - Private Recreation
- RU1 - Primary Production
- RU2 - Rural Landscape
- RU3 - Forestry
- RU5 - Village
- RU6 - Transition
- SP1 - Special Activities
- SP2 - Infrastructure
- SP3 - Tourist
- W1 - Natural Waterways
- W2 - Recreational Waterways
- UL - Unzoned Land
- DM - Deferred Matter



Siva Balasubramanian  
Date: 25/03/2025  
Source: Central Coast Council  
Projection: GDA\_1994\_Transverse\_Mercator; GCS\_GDA\_1994  
[vllkz.google.com.au/water/YAMBP/Siva/DSP-2024/DSP\\_Area\\_WATER\\_2024](http://vllkz.google.com.au/water/YAMBP/Siva/DSP-2024/DSP_Area_WATER_2024)

**DISCLAIMER**  
These maps have been compiled from various sources and the publisher and/or contributors accept no responsibility for any injury, loss or damage arising from the use, error or any omission therein. While all care is taken to ensure a high degree of accuracy, users are invited to notify Councils Geospatial Group of any map discrepancies. No part of this map may be reproduced without prior written permission.  
© 2024 Department of Planning, Housing and Infrastructure & © 2025 Central Coast Council, All Rights Reserved.

DSP MAPS 2024