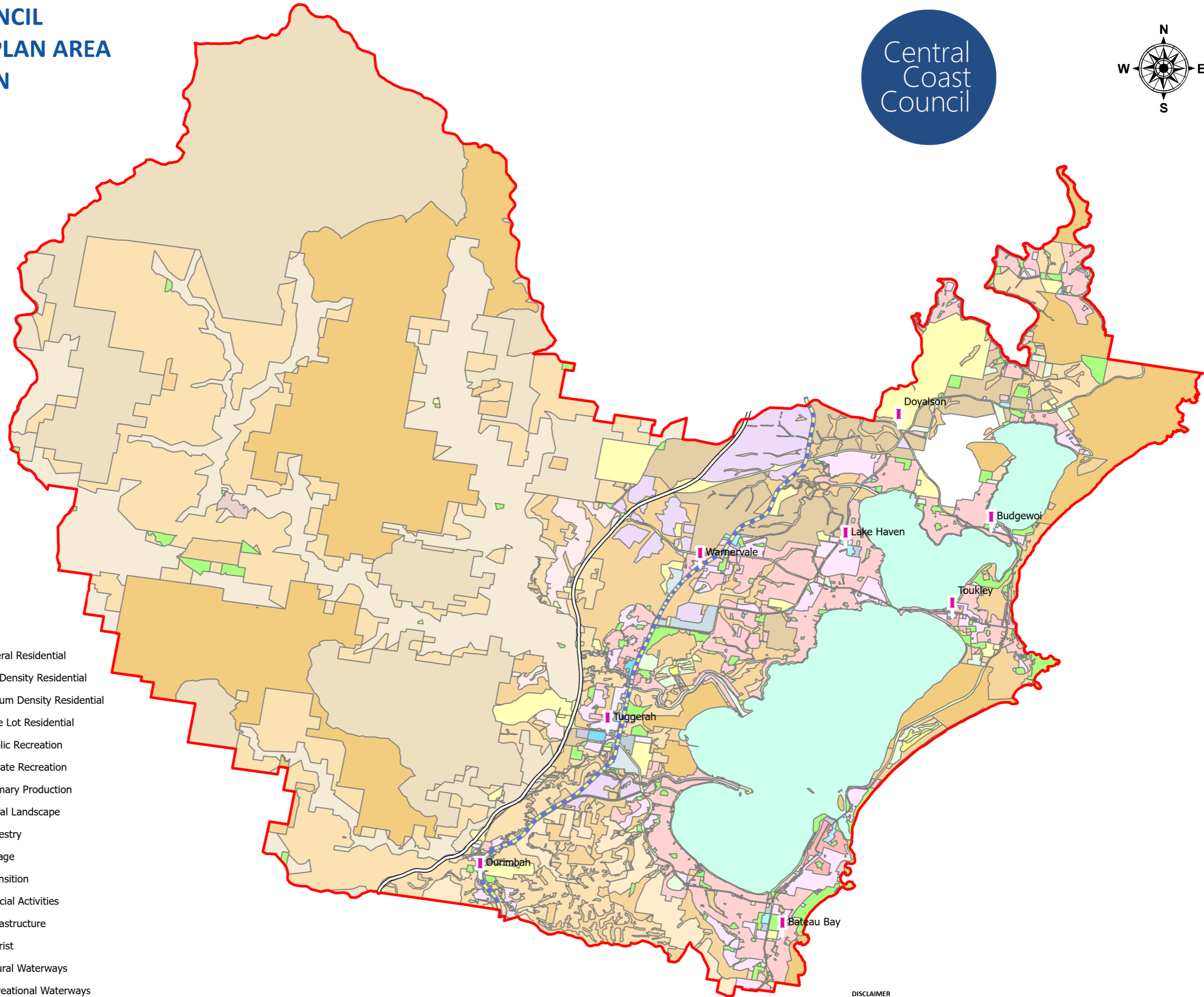


**Figure 1**  
**Development Servicing Plan Area**

---

# CENTRAL COAST COUNCIL DEVELOPMENT SERVICING PLAN AREA NORTHERN REGION



### Legend

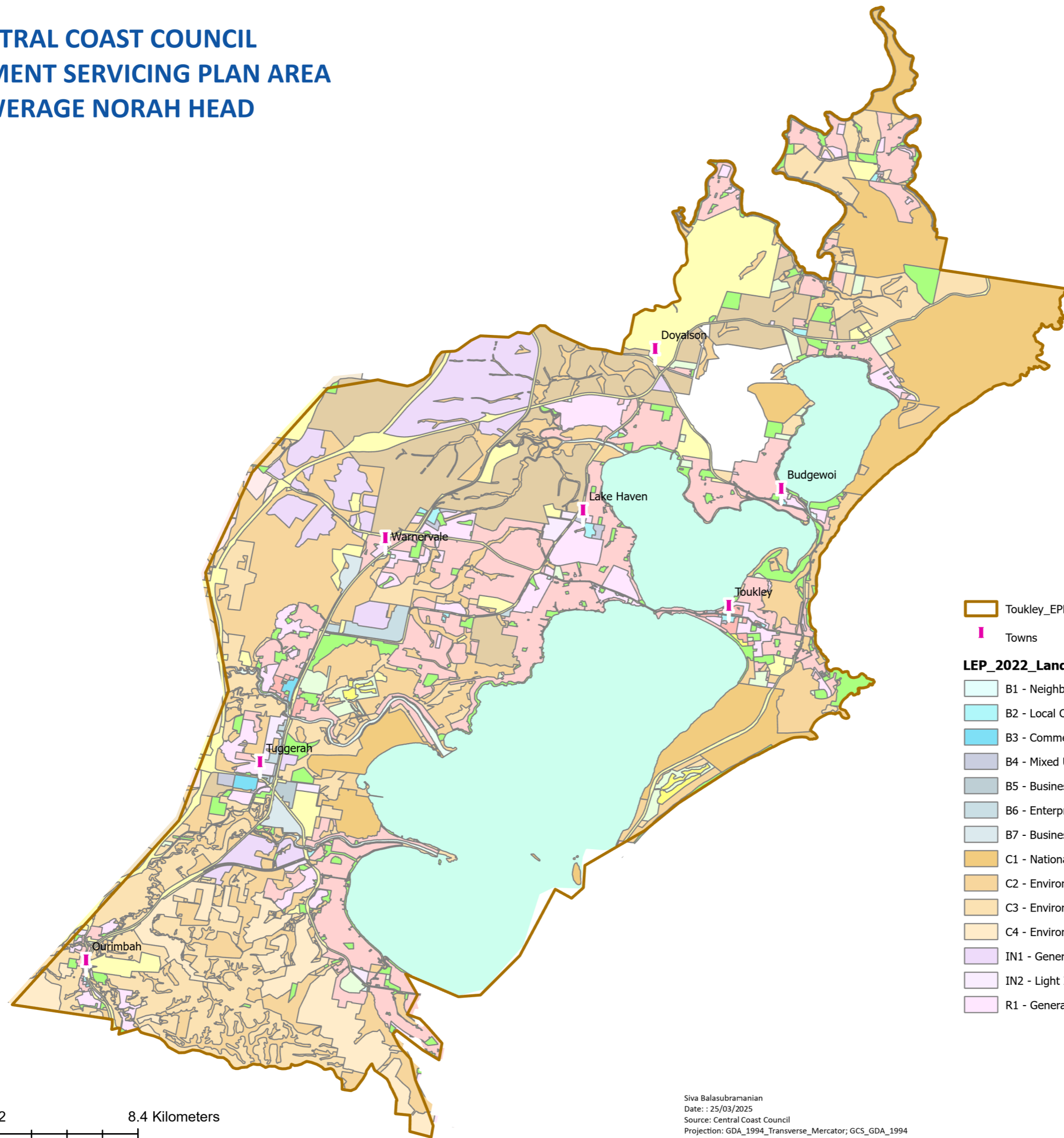
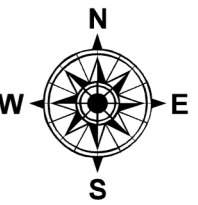
- |                                       |                                 |
|---------------------------------------|---------------------------------|
| Northern Region DSP Boundary          | R1 - General Residential        |
| Towns                                 | R2 - Low Density Residential    |
| M1 Motorway                           | R3 - Medium Density Residential |
| Railway                               | R5 - Large Lot Residential      |
| <b>LEP_2022_LandZoningMap</b>         | RE1 - Public Recreation         |
| B1 - Neighbourhood Centre             | RE2 - Private Recreation        |
| B2 - Local Centre                     | RU1 - Primary Production        |
| B3 - Commercial Core                  | RU2 - Rural Landscape           |
| B4 - Mixed Use                        | RU3 - Forestry                  |
| B5 - Business Development             | RU5 - Village                   |
| B6 - Enterprise Corridor              | RU6 - Transition                |
| B7 - Business Park                    | SP1 - Special Activities        |
| C1 - National Parks & Nature Reserves | SP2 - Infrastructure            |
| C2 - Environmental Conservation       | SP3 - Tourist                   |
| C3 - Environmental Management         | W1 - Natural Waterways          |
| C4 - Environmental Living             | W2 - Recreational Waterways     |
| IN1 - General Industrial              | UL - Unzoned Land               |
| IN2 - Light Industrial                | DM - Deferred Matter            |



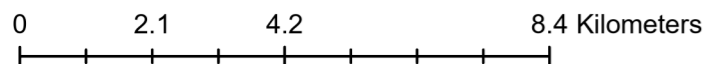
Siva Balasubramanian  
Date: 25/03/2025  
Source: Central Coast Council  
Projection: GDA\_1994\_Transverse\_Mercator; GCS\_GDA\_1994  
(\\nke.gisford.nsw.gov.au\water\AMISP\Show\DSP-2024\DSP\_Area\_WATER\_2024)

**DISCLAIMER**  
These maps have been compiled from various sources and the publisher and/or contributors accept no responsibility for any injury, loss or damage arising from the use, error or any omission therein. While all care is taken to ensure a high degree of accuracy, users are invited to notify Councils Geospatial Group of any map discrepancies. No part of this map may be reproduced without prior written permission.  
© 2024 Department of Planning, Housing and Infrastructure & © 2025 Central Coast Council, All Rights Reserved.

# CENTRAL COAST COUNCIL DEVELOPMENT SERVICING PLAN AREA SEWERAGE NORAH HEAD



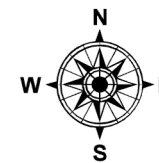
Legend	
Toukley_EPL Boundary	R2 - Low Density Residential
Towns	R3 - Medium Density Residential
<b>LEP_2022_LandZoningMap</b>	
B1 - Neighbourhood Centre	R5 - Large Lot Residential
B2 - Local Centre	RE1 - Public Recreation
B3 - Commercial Core	RE2 - Private Recreation
B4 - Mixed Use	RU1 - Primary Production
B5 - Business Development	RU2 - Rural Landscape
B6 - Enterprise Corridor	RU3 - Forestry
B7 - Business Park	RU6 - Transition
C1 - National Parks & Nature Reserves	SP1 - Special Activities
C2 - Environmental Conservation	SP2 - Infrastructure
C3 - Environmental Management	SP3 - Tourist
C4 - Environmental Living	W1 - Natural Waterways
IN1 - General Industrial	W2 - Recreational Waterways
IN2 - Light Industrial	UL - Unzoned Land
R1 - General Residential	DM - Deferred Matter



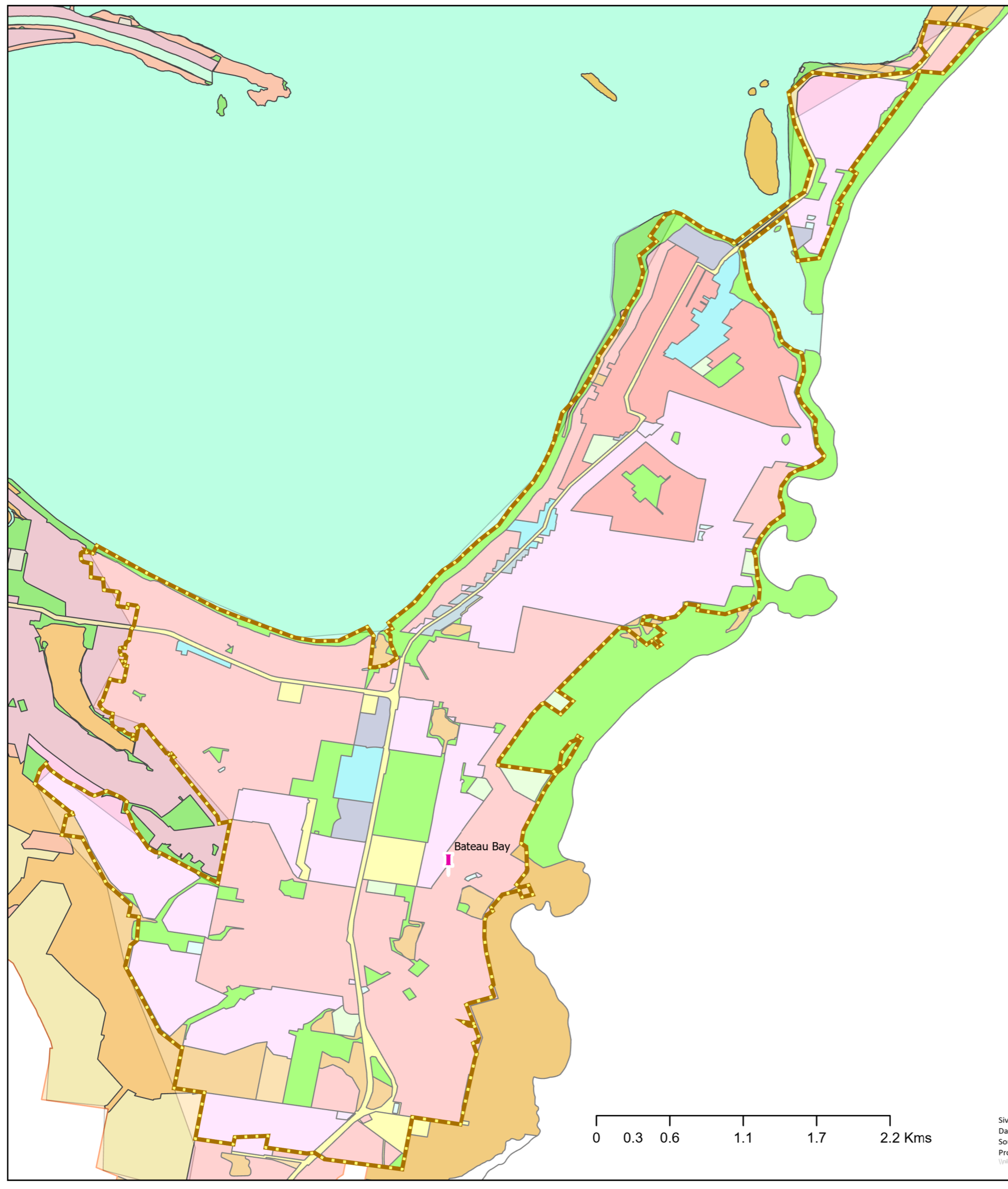
Siva Balasubramanian  
Date: : 25/03/2025  
Source: Central Coast Council  
Projection: GDA\_1994\_Transverse\_Mercator; GCS\_GDA\_1994  
\\nlke.gosford.nsw.gov.au/water/VMBP/Siva/DSP-2024/DSP Area\_WATER 2024

**DISCLAIMER**  
These maps have been compiled from various sources and the publisher and/or contributors accept no responsibility for any injury, loss or damage arising from the use, error or any omission therein. While all care is taken to ensure a high degree of accuracy, users are invited to notify Councils Geospatial Group of any map discrepancies. No part of this map may be reproduced without prior written permission.  
© 2024 Department of Planning, Housing and Infrastructure & © 2025 Central Coast Council, All Rights Reserved.



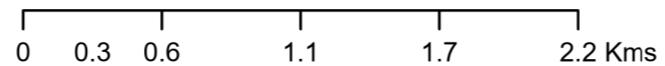


# CENTRAL COAST COUNCIL DEVELOPMENT SERVICING PLAN AREA SEWERAGE WONGA POINT



- Legend**
- Wonga Point EPL Boundary
  - Towns
- LEP\_2022\_LandZoningMap**
- B1 - Neighbourhood Centre
  - B2 - Local Centre
  - B4 - Mixed Use
  - B6 - Enterprise Corridor
  - C1 - National Parks & Nature Reserves
  - C2 - Environmental Conservation
  - C3 - Environmental Management
  - C4 - Environmental Living
  - IN2 - Light Industrial
  - R1 - General Residential
  - R2 - Low Density Residential
  - R3 - Medium Density Residential
  - RE1 - Public Recreation
  - RE2 - Private Recreation
  - SP1 - Special Activities
  - SP2 - Infrastructure
  - W1 - Natural Waterways
  - W2 - Recreational Waterways
  - UL - Unzoned Land
  - DM - Deferred Matter

Bateau Bay



Siva Balasubramanian  
Date : 25/03/2025  
Source: Central Coast Council  
Projection: GDA\_1994\_Transverse\_Mercator; GCS\_GDA\_1994  
[\\www.gisford.nsw.gov.au/water/Pages/ServiceAreaDevelopmentServicingPlanArea\\_WATER\\_2024.aspx](https://www.gisford.nsw.gov.au/water/Pages/ServiceAreaDevelopmentServicingPlanArea_WATER_2024.aspx)

**DISCLAIMER**  
These maps have been compiled from various sources and the publisher and/or contributors accept no responsibility for any injury, loss or damage arising from the use, error or any omission therein. While all care is taken to ensure a high degree of accuracy, users are invited to notify Councils Geospatial Group of any map discrepancies. No part of this map may be reproduced without prior written permission.  
© 2024 Department of Planning, Housing and Infrastructure & © 2025 Central Coast Council, All Rights Reserved.