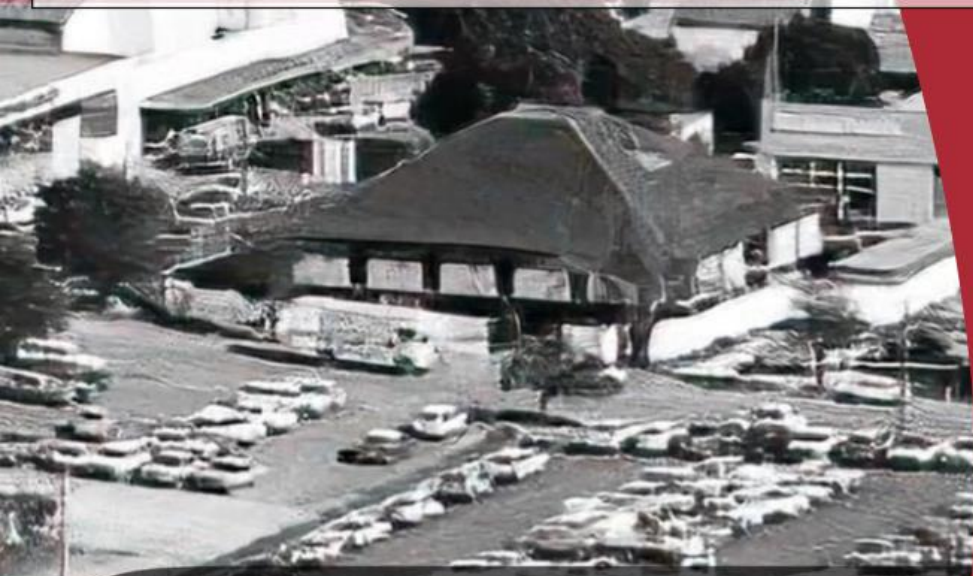


# GOSFORD LIBRARY HERITAGE SIGNIFICANCE

Merril Jackson OAM ADLFAH BHIP

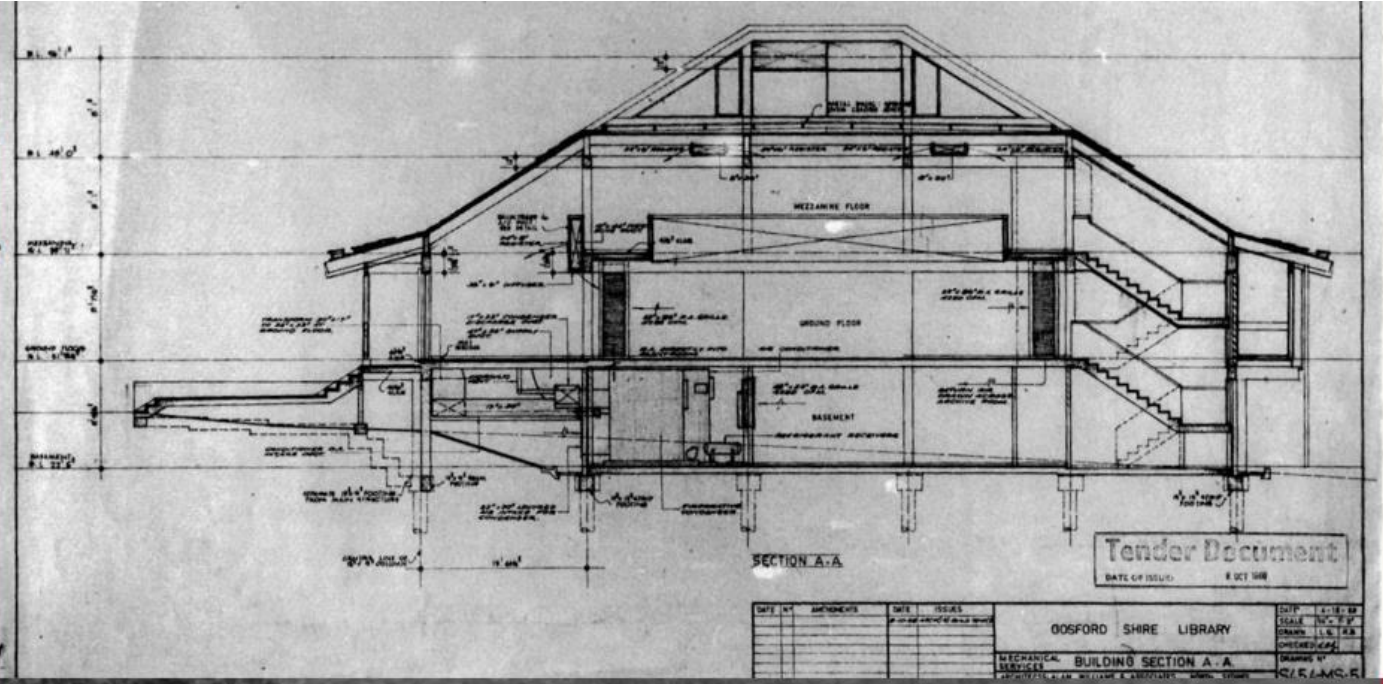
Review Committee Meeting-Gosford Library (demolition) February 12, 2025



## Gosford Library UNDER CONSTRUCTION

1969

Gwen Dundon c.1969



Gwen Dundon c.1969

## The assessment of heritage is a discipline.

The heritage we see and touch is referred

### **‘tangible heritage’**

i.e. buildings & objects, etc.

Heritage without physical presence, such as **language and tradition, etc.** is referenced as

### **‘intangible heritage’**

*Heritage can be buildings, objects, archaeological remains, gardens, shipwrecks, streetscapes and much more.*

*Cultural significance means: aesthetic, historic, scientific, social or spiritual value for past, present or future generations.*

To be considered HERITAGE SIGNIFICANT at a local or state level, the tangible or intangible HERITAGE item/asset/space must attain at least one (1) of the following NSW Heritage criteria:

Criterion (a) **Historic significance**

Criterion (b) **Historical association** (*Special associations*)

Criterion (c) **Aesthetic/creative/technical achievement**

Criterion (d) **Social, cultural and spiritual significance**

Criterion (e) **Research potential**

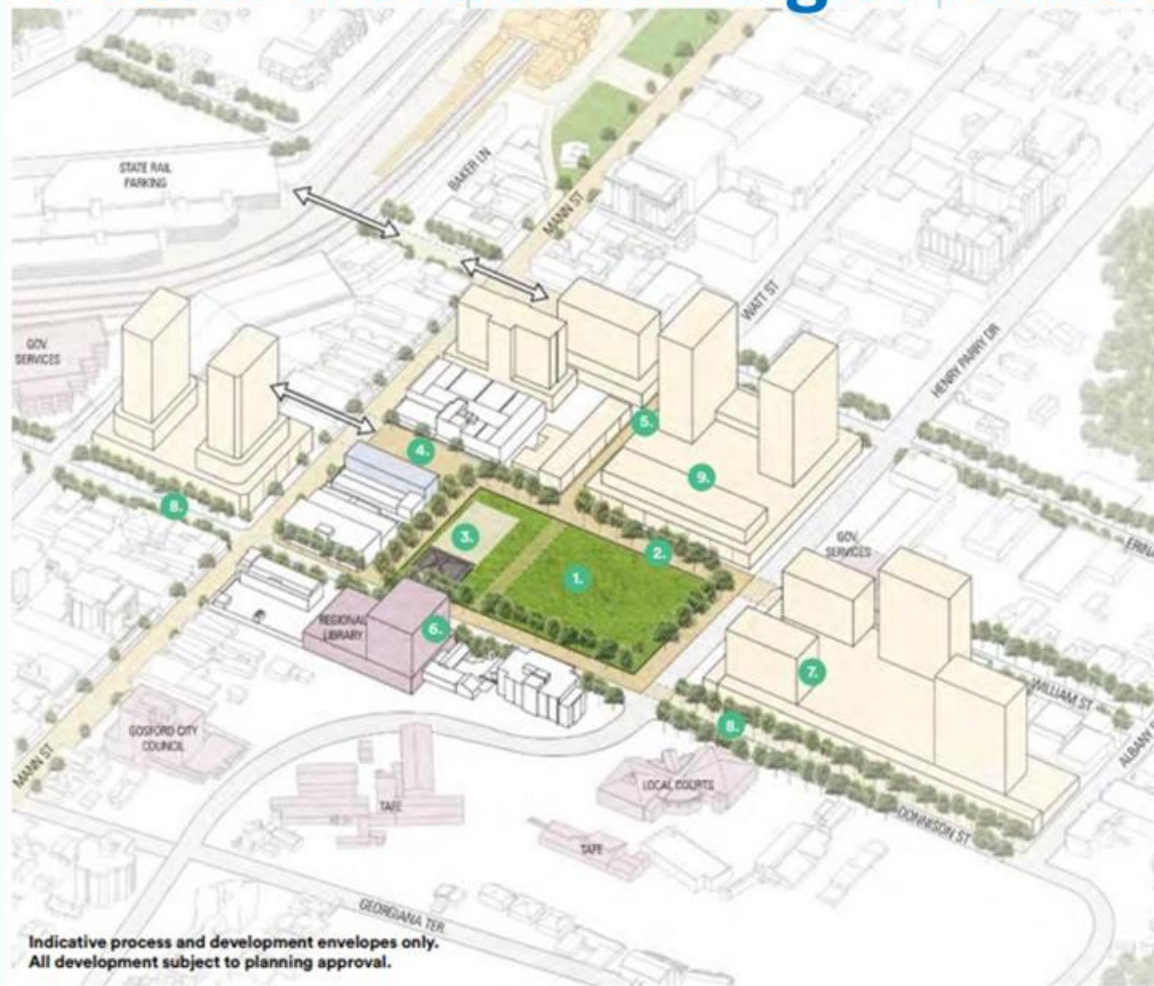
Criterion (f) **Rare**

Criterion (g) **Representative**

## 1.4 Civic Heart design principles

1. Create a 'green room' – respite for the growing city.
2. Relocate activity to the edge and activate where people move.
3. Re-purpose library as a public building – possible Town Hall, meeting place, flexible exhibition space. Investigate upgrade or new cafe integrated with park. Create a civic plaza and connect to Mann Street with active edges.
4. Increase visual connection between Mann Street and the park. Streetscape upgrade to Mann Street.
5. Establish through connection to Watt Street.
6. Align connection to new regional library. Explore secondary connections between regional library, TAFE, Conservatory of Music and Council.
7. Investigate opportunity to retain public parking in part of future development behind an active edge to Henry Parry Drive.
8. Connect park to reserves with tree planting along Donnison Street.
9. Locate development height to minimise overshadowing of Kibble Park.

# Extensive NSW Govt. public consultation occurred prior to the 2018 Gosford Urban Design Framework (UDF)



Indicative process and development envelopes only.  
All development subject to planning approval.

# Increased recognition of

DOCOMOMO AUSTRALIA SYDNEY TALK SERIES – CONTEXTUALISING BRUTALISM / JULY 25TH

SYDNEY / JULY 25th

News, Talk

Brutalism, Docomomo australia Sydney Talk Series, Sydney



Government Architects Branch, Department of Mines, Chemistry Laboratory, Photo Eric Sierins

Contextualising Brutalism: from NSW public architecture between 1958-1988 to its reinterpretation today at a time allowing preservation.

# the Modernist



SYDNEY / UNTIL JUNE 9TH

## Your say: Northern Beaches Council Heritage Study

Sydney Northern Beaches Council is undertaking a Modern Architecture Heritage Study to investigate the influence of the Modernist movement in architecture and how it was implemented in the Northern Beaches area.

**M.H. NSW**

**Sydney Adaptive Reuse Open**

**3 NOVEMBER**

Member pre-sale on now - [Sydney Open Adaptive Reuse](#) on Sunday 3 November.

Explore six world-class heritage buildings that have been masterfully adapted into new spaces for work, life and play.

In this Sunday line-up, we open the doors to buildings and spaces rarely open to the public:

- [White Bay Power Station](#)
- [Sub Station No.164 and Machine Hall](#)
- [Sirius](#)
- [The Brewery](#)
- [50 Martin Place](#)
- [The Mint](#) (including office spaces and the Caroline Simpson Library)

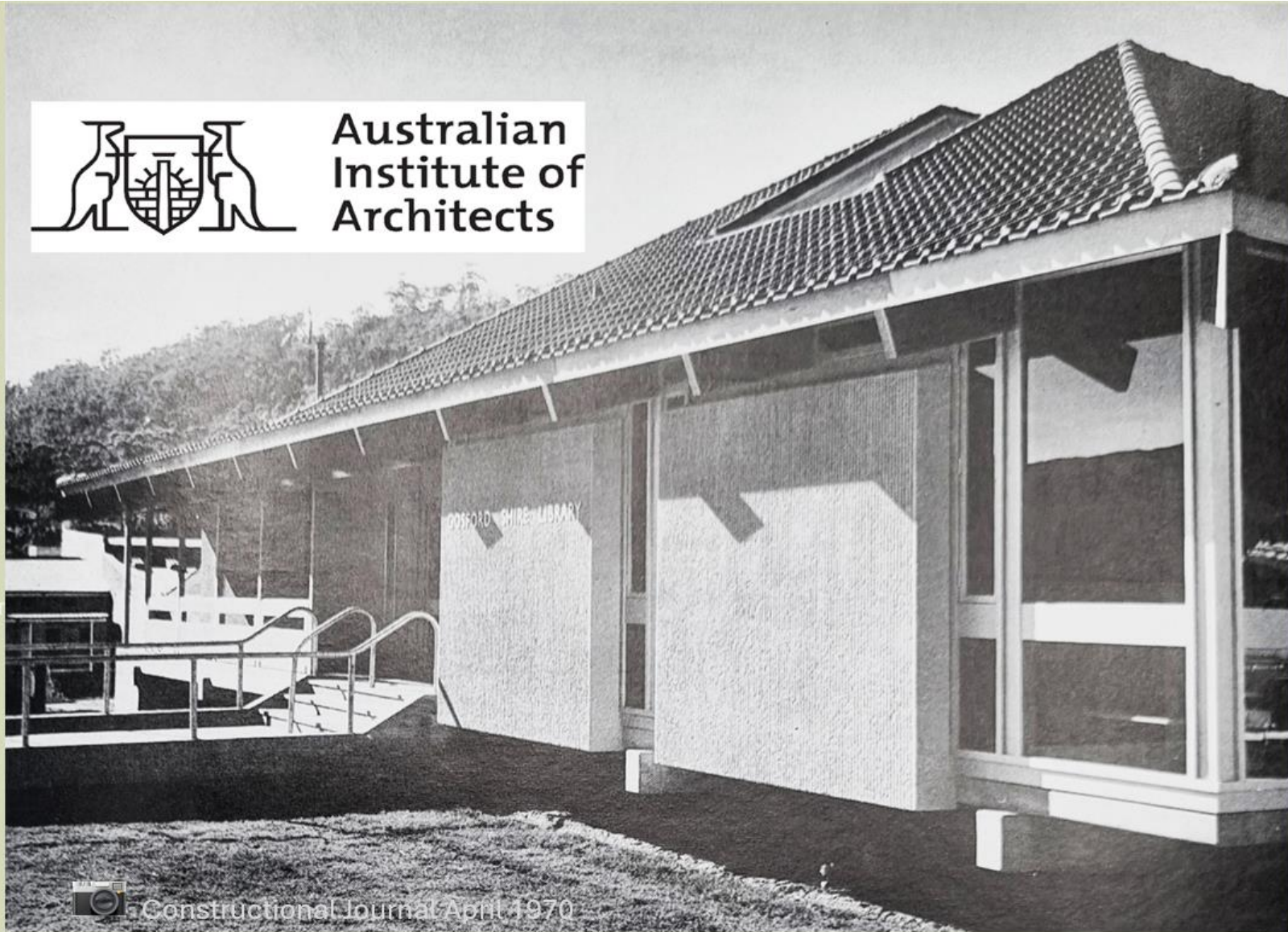
Enjoy a day of drop-in talks and tours with in-depth curated experiences and stories from the architects, designers and heritage experts connected to each site.

# & adaptive reuse

20  
24



Australian  
Institute of  
Architects



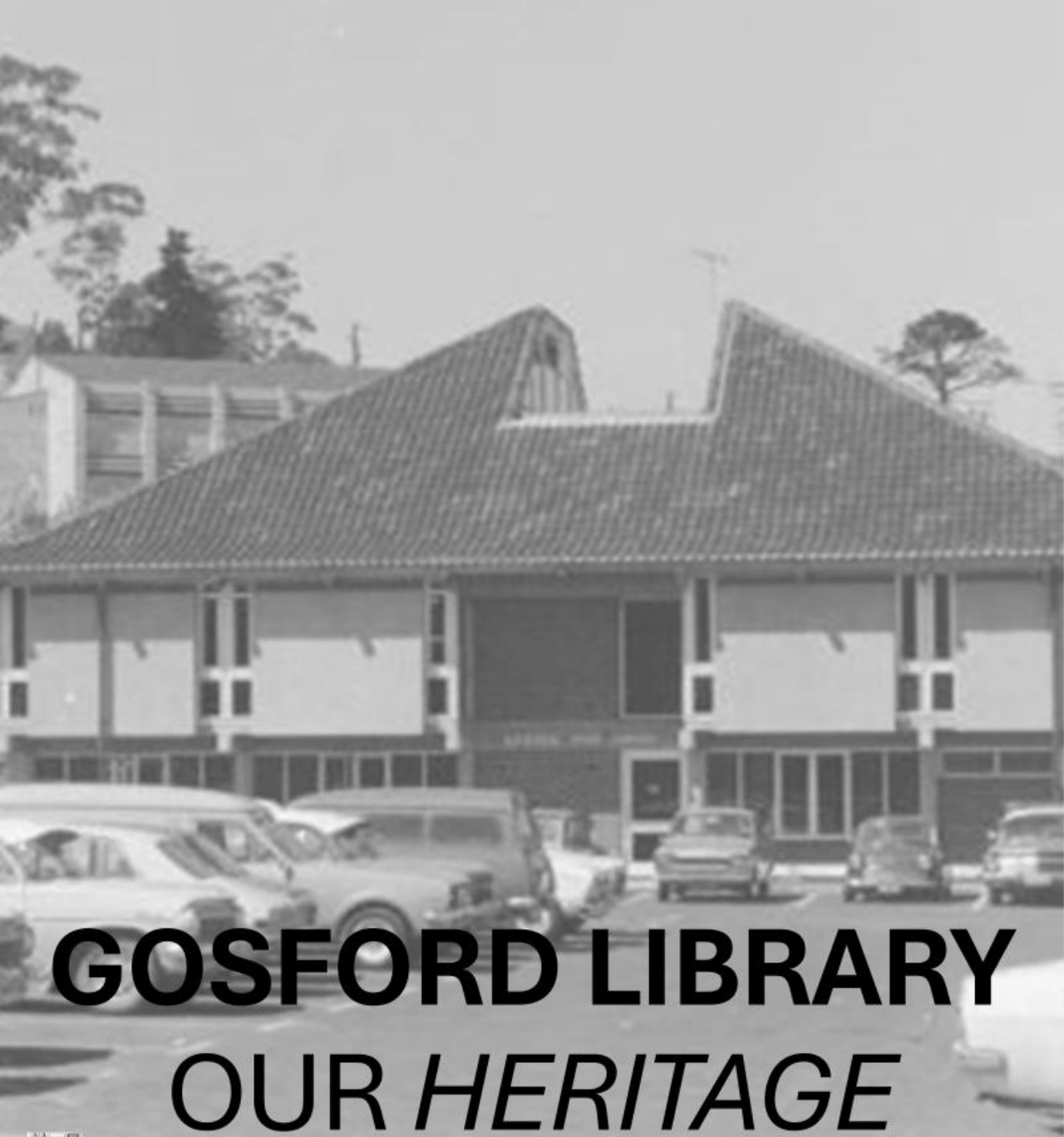
19  
69

# GOSFORD LIBRARY

HERITAGE REGISTERED

5:19

Merril Jackson OAM ADLFAH BHP



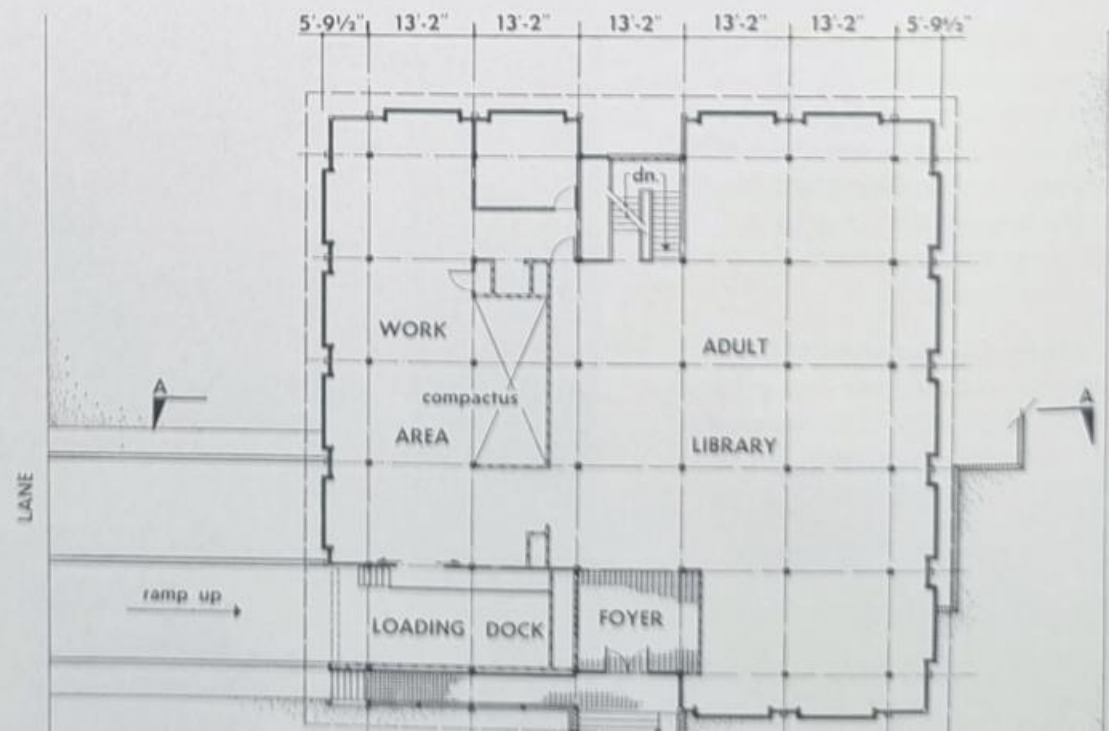
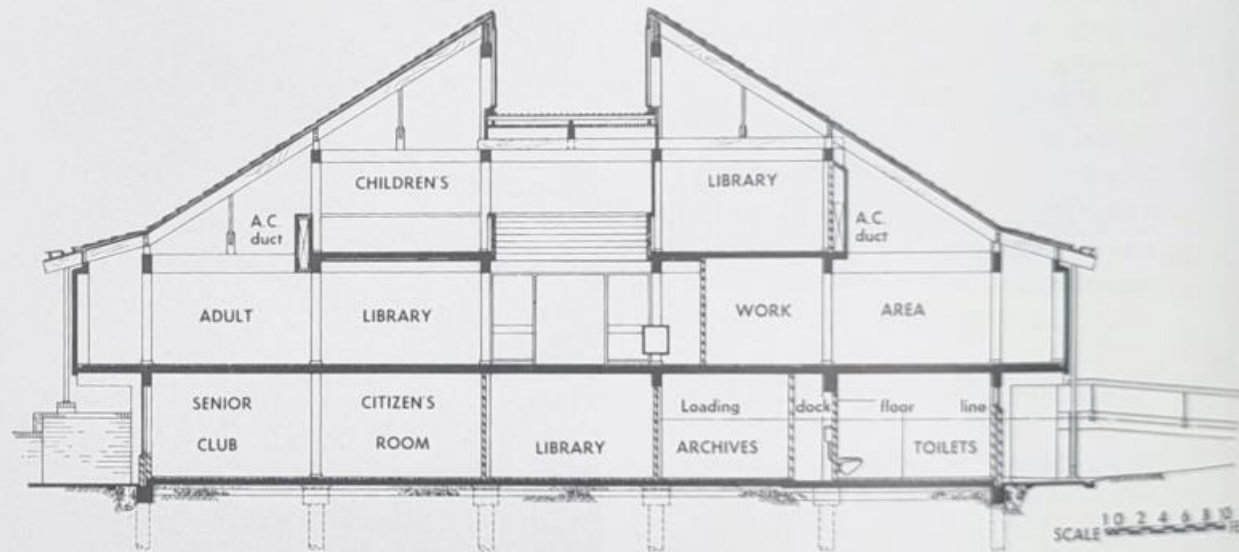
# GOSFORD LIBRARY

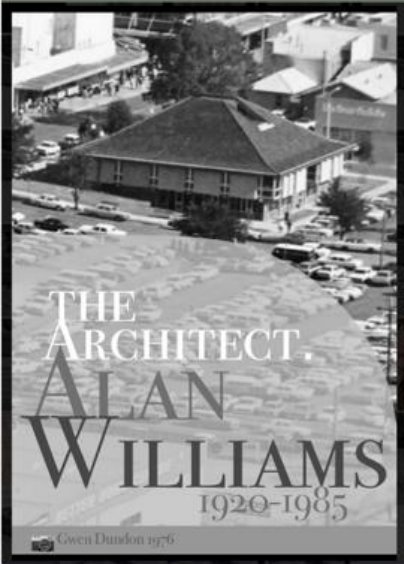
## OUR HERITAGE



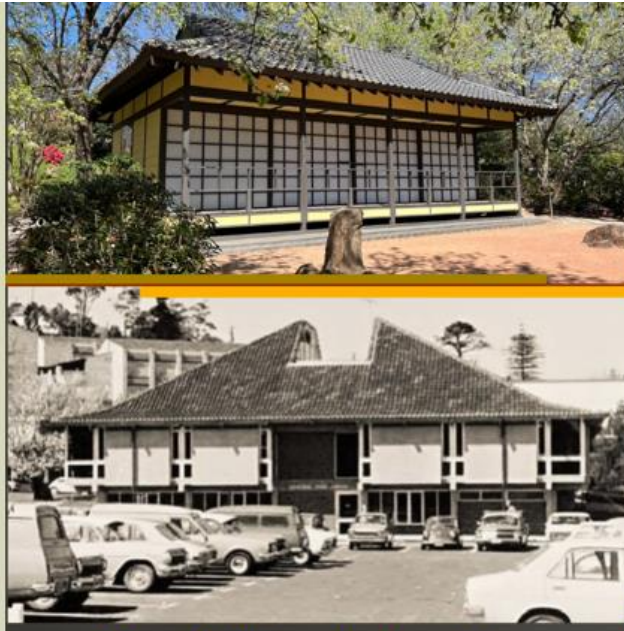
Gwen Dundon c.1969

Merril Jackson OAM ADLFAH BHIP





Architect. Alan Williams  
 Getty Image 1984 Fairfax Media



Alan William & Associates design for Gosford Library was influenced by Japanese architecture & aesthetics.

Gosford Library's NSW Heritage criteria  
 (b) Historical Association/ Special associations.  
 (c) Aesthetic, creative, technical achievement. [Modernist]

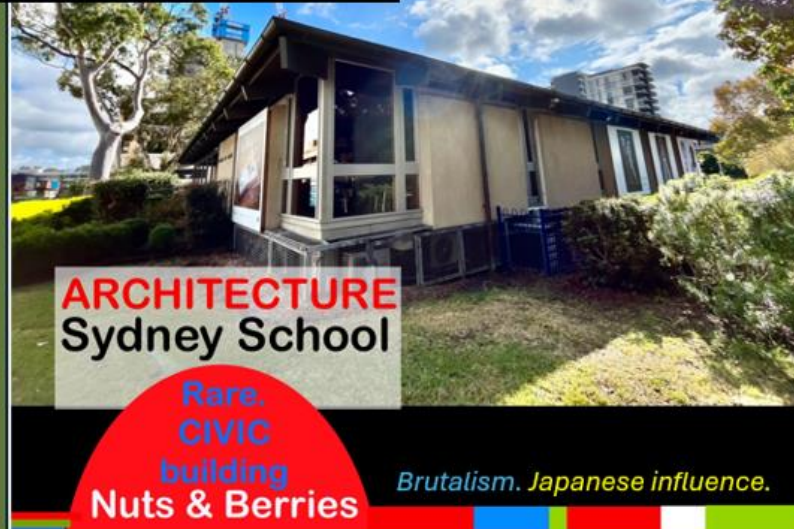


**GOSFORD LIBRARY**  
 ARCHITECT. Alan Williams & Associates

- Known buildings:-*
- \* Lyceum Theatre, Pitt St, Sydney, (1966)
  - \* 56-62 Berry Street, North Sydney (c. 1971)  
 (Applicant: Max Bowen)
  - \* Prudential Assurance 39 Martin Place (1971)
  - \* 539-541 Elizabeth St, Surry Hills (1975)
  - \* 52A Hopetoun Ave, Mosman (Williams home)
  - \* 9 Amaroo Crescent, Mosman (Williams home)
  - \* The Ensemble Theatre & Studio (1984)  
 (Williams)
- Alan Williams & Associates merged in a partnership with Stephenson & Turner in February 1970.  
 Williams died in January 1985, Sydney.



Merril Jackson OAM ADLFAH BHIP



ARCHITECTURE  
 Sydney School

Rare.  
 CIVIC  
 building  
 Nuts & Berries

Brutalism. Japanese influence.

MODERNIST. Gosford Library  
 RARE. Civic building of Japanese influence  
 ARCHITECTURE. Sydney School 'nuts & berries' and Brutalist.  
 ARCHITECT. Alan Williams & Associates  
 ENGINEER. Structural. Ove Arup  
 ENGINEERS. Mechanical, Electrical, Hydraulic, Acoustic. D S Thomas & Partners  
 BUILDER. A W Edwards  
 JOINERY. Hardy's Joinery Pty. Ltd.  
 • State-of-the-art mid-century engineered aluminium floor-to-ceiling windows. These externally feature anodised aluminium and internal timber. Also featured ceiling and wall panelling.  
 • Hancock Bros.-'Hanbro Timbeams'  
 Glulam structural roof beams  
 FABBROSTONE. Concrete prefabrication in situ.  
 • Distinctive textural cement finishes and precast concrete panels.



GOSFORD

TEXTURE ENHANCES  
ARCHITECTURAL DESIGN

Gosford Library's  
NSW Heritage criteria  
(c) Aesthetic, creative, technical  
achievement. [Modernist]

**Brick.**

Gosford Library.

Japanese midcentury  
influenced aesthetic.  
distinctive Japan inspired.  
textural vertical ribbing.  
matt finish.





Gosford Library was designed by Ove Arup, the internationally acclaimed Structural Engineers of the Sydney Opera House.

Gosford Library's history is deeply interconnected with The National Carillon



Gosford Library's history is interconnected with Australia Square

Gosford Library's - Heritage criteria  
*(b) Historical Association/ Special associations.*

*Who's Who of mid-century architectural, construction, artisans, and building industry*

*(c) Aesthetic, creative, technical achievement. [Modernist]*

Gosford Library's history is interconnected with the Australian Academy of Science



D S Thomas & Partners - the mechanical, electrical, hydraulic and acoustic engineers of the GOSFORD LIBRARY - other work: the Cameron Offices- Belconnen, Canberra, ACT and King George Towers, Sydney (1976) [aka: IAG house, American Express Tower, NRMA House 1, etc.]

Merril Jackson OAM ADLFAH BHIP





“

'.....if we stop a moment to study the work for this very important cylindrical skyscraper, we can highlight some of the most important technical innovations imported in Australia by Fabbro'.

Alberto Pratelli



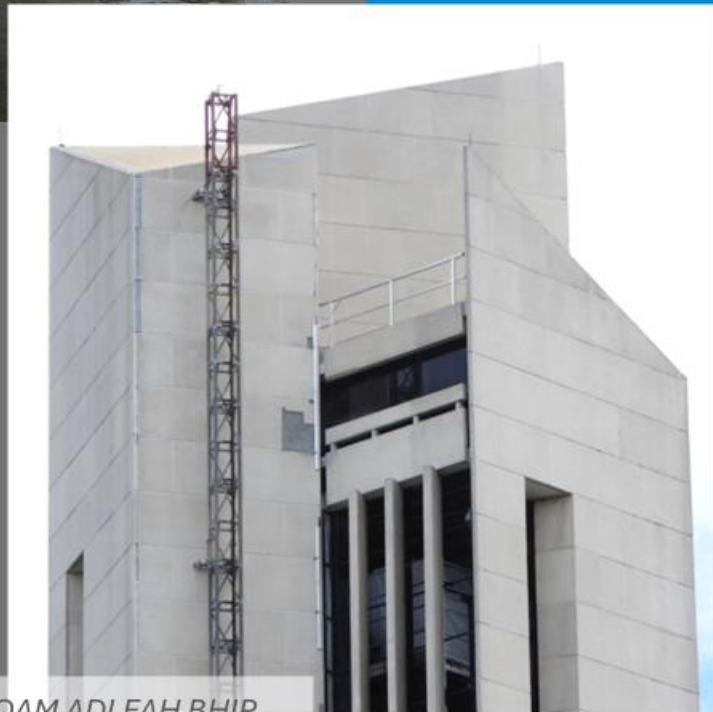
Gosford Library's NSW Heritage criteria  
**(b) Historical Association/ Special associations.**

**(c) Aesthetic, creative, technical achievement. [Modernist]**  
*Who's Who of mid-century architectural, construction, artisans, and building industry*

**(g) Representative-** *demonstrates a construction method, engineering design, technology, or use of materials, of historical importance.*

“  
Each façade he (FABBRO) invented a new surface, the base is prefabrication, but there is always a way of working related to the dexterity of the craftsmanship.

Alberto Pratelli



RINALDO UMBERTO FABBRO  
FABBROSTONE

Source: Reminders of War File Archive - UKIP London





**FABBRO emigrated to Australia post-war and is the pioneer of midcentury *insitu* concrete fabrication and textural finishes across Australia**

Strongly influenced by contemporary Japanese architecture, the Gosford Shire Library with its dominant roof and subdued natural colours contrasts sharply with the gaudy commercialism of its surroundings.

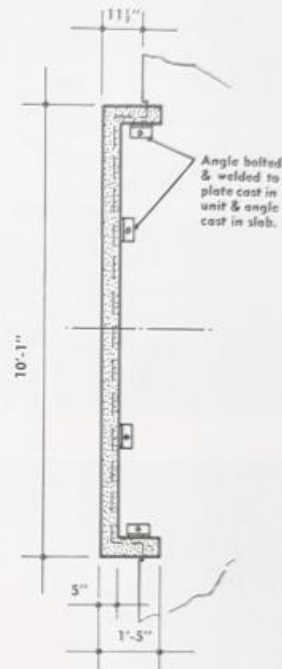
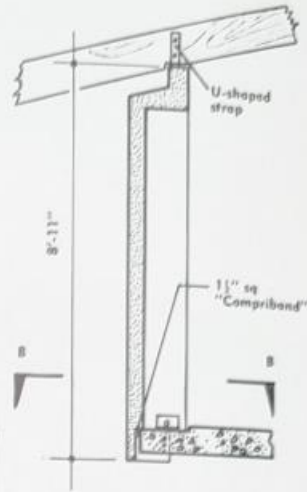
## CONCRETE FABRICATION Gosford Library

The structure comprises a reinforced concrete frame with all columns supported on piles approximately 20 ft. long. The pile tops are tied together by beams around the

perimeter and the loading dock. The internal pile tops are tied by the basement floor which was designed as a suspended flat slab with the ground acting as a form.

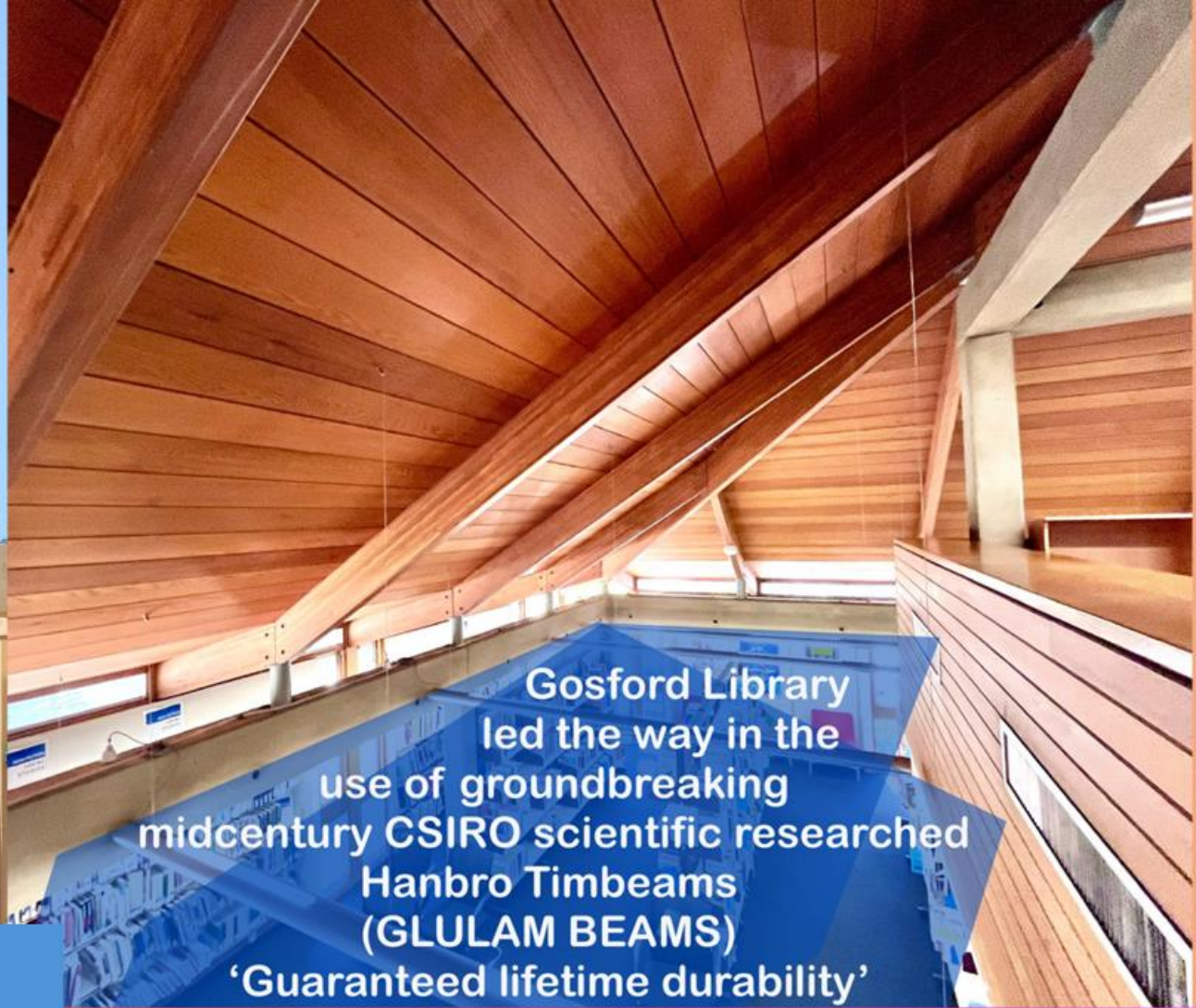
Externally, the main elements of the completed library building are the dark brown hip roof with its unexpected cleft in the centre and the precast concrete cladding panels with their superb striated surface finish.

The surface required was one which would reflect sunlight from a mellow colour and this was achieved by using backing concrete with a 1½ in. veneer of white cement concrete.



Detail of precast panels.





**NSW Heritage criteria:**

*(Gosford Library)*

- (a) Historical associations
- (c) Aesthetic, creative and or technical achievement
- (e) Research potential
- (g) Representative of a class of places that demonstrate a construction method, engineering design, technology, or use of materials, of historical importance

***A layered history of Gosford's urban architectural history; Gosford Library as an Australian mid-century civic building to first to use the GLULAM structural laminate.***

13:19



HANCOCK Pty Ltd

**HANBRO**

**Timbeams**

(Groundbreaking  
Glulam innovation)



**GLULAM.**

Midcentury  
engineered  
wood beams.

Structural  
and  
decorative  
application.

Merril Jackson OAM ADLEAH BHIP

Structural laminate', *Canberra Times*, Monday 18 October 1965, p.8

14:19

**“After two years of experiments, scientists and researchers have developed a formula that has spearheaded production of a revolutionary new type of structural timber. They have made it possible for long lengths of hardwood laminated beams to be produced for the first time in Australia for exterior and interior application.”**

# HARDY'S JOINERY. ENGINEERED & CUSTOM BUILT. CANTELEVER. CORNER WINDOWS.



NSW Heritage criteria:

(a) Historical associations

(c) Aesthetic, creative and or **technical achievement**

(e) Research potential

(g) Representative - demonstrates a construction method, engineering design, technology, or use of materials, of historical importance.

Merril Jackson OAM ADLFAH BHP

## GOSFORD LIBRARY



The Australian Academy of Science – Shine Dome



Image: Pam Saunders

Hardys  
Joinery  
Canberra  
GOSFORD  
LIBRARY 1969



Gosford Library-  
Mezzanine

Modernist



Hardy's Joinery –  
Australian War Memorial

16:19



# All timber kiln dried

**A**N essential process at Hardys joinery factory is steam kiln drying through which every piece of timber used in joinery must first pass

The timber is left there for several more months, the actual period being decided by the size of the cut timber and the weather.

Then the timber goes through the kiln drying process. It is placed in a chamber heated by steam and it remains there for several days until the moisture content has dropped to 15 per cent.

This process has the effect of collapsing the cells of the wood and so, to correct it, the timber is then placed in a chamber where the cells are reinforced by steam. The two processes take about seven days to complete.

The steam used in the drying and reinflating processes is supplied by the factory boiler which uses sawdust and shavings from the joinery as fuel.

They are brought to the boiler by hundreds of feet of ducts which reach out to all points of the factory. A powerful blower forces the particles along the ducts and up to a huge hopper above the boiler room.

This timber is mainly alpine and mountain ash cut above the snowline in the Tumbarumba district and sawn into convenient lengths and sizes at Hardys Tumbarumba mill.

There it is left for from four to 12 months for air drying, and when its moisture content has been reduced to about 30 per cent, the timber is railed to Wagga.

From the company's private siding, it is unloaded and restacked by the method called "re-stripping". This means that the individual lengths of timber are stacked with narrow strips of wood between them to allow air to circulate freely through the stack

*Canberra Times, Friday 30 August 1968*



## JOINERY

Groundbreaking  
floor-to-ceiling  
engineered  
aluminum  
exterior and  
timber interior

Kiln dried timber  
wall & ceiling  
interior panels

GLULAM -  
laminated  
structural  
beams



*Gosford Library  
BOOKMOBILE  
Drive in entry ramp*



*Source: Gwen Dundon Collection c.1970s Flickr. 'Gostalgia: local history from Gosford Library'*



*Source: Gwen Dundon collection c.1970s Flickr. 'Gostalgia: local history from Gosford Library'*

*Source: Gwen Dundon Collection c.1970s Flickr. 'Gostalgia: local history from Gosford Library'*

## **GOSFORD LIBRARY HERITAGE SIGNIFICANCE – Social and cultural significance**

The original design of a civic library with provision for bookmobile to enter, and a dumbwaiter inside to transport the books between floors

**AUSTRALIAN GOVERNMENT AND NSW GOVERNMENT endorsed statements:**

**HERITAGE involves identity formation, cultural understanding, sense of place, education and inspiration, economic benefits and sustainability.**

- **By identifying, protecting and managing our heritage we are conserving a valuable asset and ensuring that those places will continue to be experienced and enjoyed by future generations.**

**The HERITAGE of NSW has advised that:**

- **Central Coast Council is responsible for recognising and protecting local heritage.**

The Central Coast Council :

- **The Central Coast Council ONE STRATEGY – ‘Balanced and Sustainable Development’ Objective 1 – Preserve local character, and protect our drinking water catchments, heritage.....’**

# **QUESTIONS FROM COUNCILLORS**

*THE CENTRAL COAST COUNCIL REVIEW PANEL*